



**HUNTSVILLE TOWN  
ANNEXATION POLICY PLAN**

**HUNTSVILLE, UTAH**

**MARCH 7, 2013**

# 1. HUNTSVILLE TOWN VISION STATEMENT

Huntsville Town is a small, semi-rural town located in the Ogden Valley of the State of Utah. With improved transportation access, the rapid growth of Northern Utah, and the impact of the 2002 Winter Olympics, the entire Ogden Valley experienced it's own rapid growth in the latter 2000's. This growth is affecting the lifestyle of the Ogden Valley. While it is impossible to remain a town undergoing no changes, the citizens of Huntsville Town desire to grow in a planned and orderly manner. The Town's architecture is a blend of everything from original pioneer, to large, modern home styles. The Town's recent growth reflects the desirability of life in Ogden Valley and the emergence of a few large vacation homes and the trending escalation of the average home price is changing the Valley's demographics to that of a older population and higher income level. The most striking feature of the Town is the visual perspective given via the large lots and house setbacks, which combined with numerous trees and varieties of vegetation, imparts a village atmosphere. Blended with the surrounding mountain vistas, the feeling is of a spacious, comfortable, western country living environment. The character has been deeply influenced by the pioneer spirit, tolerance for and support of individual rights and sense of working together for the common good. It is not uncommon to see people on horseback or horse drawn carriages on the streets, or to spot migrating birds or even an occasional deer or moose. The Town was originally laid out around a farming/agricultural grid format, with wide streets and alleyways.

Therefore, the **primary theme** proposed for the Vision Statement is to preserve as much of this semi-rural character of Huntsville as possible in the coming years. The recent resident survey results emphasized that this is the essence of Huntsville Town and that residents want to preserve this character.

## Vision Statement for Huntsville Town

**Huntsville Town residents enjoy a low population density, outdoor influenced, mountain country lifestyle conducive to raising families and fostering positive community spirit. Huntsville Town residents realize that growth is taking place all through Ogden Valley, including the immediate vicinity of the Town. We welcome the diversity that new residents offer the Town, but are desirous of maintaining our high quality lifestyle by managing and shaping our future growth in a way that preserves and hopefully enhances this lifestyle.**

## **2. CRITERIA FOR DECISIONS ON FUTURE ANNEXATION**

- A. As part of its ongoing effort to anticipate responsible growth, Huntsville Town has identified territory adjacent to its present Huntsville Town boundaries that some of the owners have expressed an interest in becoming a part of Huntsville Town in the future. Areas considered for annexation must fall within the areas designated for future possible annexation contained in this Huntsville Town Annexation Policy Plan. Even though property proposed for annexation is located within the potential annexation expansion area, there is no guarantee that any annexation request will be approved by the Huntsville Town Council.
- B. The character of the Huntsville Town community is primarily residential, with a small mix of commercial, recreational, and agricultural. Areas considered for annexation should be compatible with this character. The annexed land shall be zoned to be compatible with surrounding uses within Huntsville Town and its nearby vicinity.
- C. Areas considered for annexation must be contiguous to the Corporate Limits of Huntsville Town at the time of submission of an annexation request.
- D. Areas considered for annexation shall not be located within the corporate limits of another incorporated town or be part of a previously filed annexation petition that has not been either denied, accepted, or approved.
- E. When feasible, Huntsville Town will consider as appropriate petitions for annexation, along boundaries of water improvements, special service districts, or other taxing entities.
- F. Annexation will eliminate existing, and not create, islands and peninsulas of unincorporated territory. When the determination of a peninsula is in question, the Weber County Surveyor will make the determination.
- G. Annexation should prevent overlapping functions of government, promote efficient delivery of services, and encourage the equitable distribution of community resources and obligations.
- H. Annexation should give consideration to the tax consequences to property owners within the area to be annexed, as well as the property owners within Huntsville Town, in order to prevent double taxation and to ascertain that the annexation will not be a tax liability to the taxpayers within Huntsville Town. Further, giving consideration that the cost of additional infrastructure services shall not burden current residents of Huntsville Town.
- I. Huntsville Town will determine prior to any annexation if it is feasible to serve the proposed new area with utilities and other municipal services within a reasonable amount of cost and time. Huntsville Town does not favor the annexation of areas for which it does not have the capability nor the intention to provide municipal services, unless the proposed property owners in the area agree to pay impact fees that would allow for the necessary expansion of existing service capabilities. All agreements would be formalized in a written Memorandum of Understanding prior to starting the formal annexation process.
- J. Huntsville Town will not conduct an annexation if such would create an enclave.

### **3. CURRENT STATUS OF HUNTSVILLE TOWN**

#### **A. Physical Description**

Huntsville is a small community located in the southern part of Ogden Valley, twelve miles east of Ogden City at the head of Ogden Canyon. It is the only incorporated community in Ogden Valley, which offers the residents more direct control over what happens in their immediate surroundings. Two unincorporated communities, Liberty and Eden are located in the north and central regions of the Valley. Most of the Valley's open land is used as pasture; land that is farmed is mostly irrigated fields of alfalfa or small grains. The town lies on a mostly level terrace on the Eastern Shore of Pineview Reservoir, at an elevation of nearly 5,000 feet. There is a small peninsula jutting into the reservoir on the western edge, which includes the town cemetery and several very popular swimming beaches and boating launching ramps. The U.S. Forest Service administers the beaches and shoreline, subcontracting the concessions and boat launching business.

The incorporated area of Huntsville Town is primarily west of State Route 39. State Highway 39 is a designated scenic highway passing through Ogden Canyon, running south of Pineview reservoir, turning north and heading east of Huntsville until it intersects with County Road 166 where it turns east again and heads to Monte Cristo and Woodruff in Rich County. County Road 166 follows the northern tip of Pineview and connects with Eden and the North Ogden Pass road. The intersection of State Route 39 and County Road 166 is one of the busiest in the entire valley. There are only two streets that access the Town, both coming off the north-south running portion of State Route 39, which currently forms a large portion of the eastern Town boundary. All traffic entering or leaving town uses one of these two streets. Most of the town's streets are paved, but alleys running north-south midway through some of the blocks are not. All streets and alleys are owned and maintained by Huntsville Town. To the north, south and east of State Route 39 lies unincorporated Weber County land. To the south is a steep escarpment of about 40 feet, portions of it that are within the 100-year flood plain of the South Fork of the Ogden River. An additional connector road to Huntsville is State Route 167 commonly referred to as Trapper's Loop Highway that winds over mountains to the south, and connects the Valley with Mountain Green and Interstate 84 in Morgan County.

Weber County's population was 231,236 in 2010. According to the U.S. Census, Huntsville's population was 553 in 1970, 557 in 1980, 541 in 1990, 649 in 2000 and 608 in 2010. There are approximately 249 dwelling units in Huntsville, with approximately 204 occupied by year round residents. At this point, the town is continuing to grow, however the growth has slowed due to the recent recession and is contained by area unless the Town annexes more land, there being few remaining building lots available in Town without subdividing. Should Huntsville's population exceed 1000, Utah State law would require a transition to a Class 3 city, which would require a new form of municipal government.

#### **B. Current and Proposed Land Use in Huntsville Town Boundaries**

Huntsville Town has nine classes of zoned land use: 1) Residential (R-1), 2) Commercial (C-1), 3) Commercial Resort (CR-1), 4) Agricultural (A-3), 5) Park (P), 6) Shoreline (S), 7) Open Space, 8) Flood Plain (FP), and 9) Recreational (RC).. Figure One is a zoning map of the Town that shows currently only the R-1, C-1 and RC zones exist.

##### **1) Residential**

Although residential land use is by far the largest category of land use, it comprises slightly less than half of the total area (48%). It includes large garden areas, pastures, barns, corrals and other farm out buildings. There are currently no multifamily dwellings, nor do the ordinances allow such.

The area is zoned as R-1, with a minimum lot requirement of  $\frac{3}{4}$  acre, which dates back to the original Town survey.

## 2) Commercial

Commercial zones are located in two areas, the traditional center of town and a strip of land along the southeastern corner of town including a lot for the post office. The traditional town center is small (8.5 acres) and provides the town with very little property or sales tax revenue. This area includes a building divided into small store spaces, the well-known Shooting Star Saloon, a reception hall, a building currently used as a church, two small Town-owned buildings, a small restaurant, and vacant land where the Valley Elementary School once stood. The southeastern commercial area on the east side of State Route 39 at 500 South contains the major businesses of the Town, the South Fork Village.

## 3) Agriculture and Open Space

Huntsville originated as a Mormon agricultural village where the residents lived in town and farmed the surrounding area. Agriculturally available space in the Town itself is relatively small (62 acres) currently composed of undeveloped R-1 lots. These areas are mostly used for light agriculture purposes such as grazing or maintaining animals.

## 4) Institutional, Parks and Recreation

Institutional use (24 acres) refers to public and government buildings, facilities or land (e.g. the former elementary school, library, church, post office, town hall, etc.), and a community park encompassing a square block bounded by 200 to 300 South and 7400 to 7500 East, and a .8 acre field being developed in the SE corner of the Valley School property. There is also an area zoned RC for private recreation owned by the Ogden Boat Club.

## 5) Roads

Roads, street right of ways, and alleys comprise the second largest land use in the community, 111 acres (21%). The width for the combination of street and right of way is generally 99 feet, with some variances. The width combined with the required building setbacks, increases the overall setback of homes, adding to the open feeling. The width for the paved portion of roads itself varies from 18 to 20 feet depending on the location in town. For example, the paved portion of 100 South (First Street) is wider than the rest of the town's streets because it is the primary road to Pineview Reservoir from State Route 39 and sees heavy use. Many residents use the unpaved portion of the right of way (the verge) as part of their yards. The alleys were originally created to give access to barns, corrals and out buildings, by providing a 33-foot wide easement where animals could be driven from home to pasture without using the main streets. Today, they are used by some residents for property access and by the Town and Huntsville Water Works Corporation for utilities (underground culinary and secondary water lines).

## 6) Reservoir and Wetland

This area of the Town, comprising 45 acres (8.5%) maintains the overflow volume for Pineview Reservoir. The water level varies from season to season and year to year, creating a wetland type area during times of high water.

## 7) Shoreline

A small portion of land around Huntsville is shoreline along Pineview Reservoir. Portions of this shoreline attract very large crowds during the summer months.

8) Cemetery

Huntsville's cemetery consists of 9 acres and is located at the tip of the peninsula, which juts out into the reservoir.

9) Landfill

The Town owns 40 acres of land approximately 4 miles east of Town that straddles the South Fork of the Ogden River. A portion on the north side of the river is used for a green waste landfill and 11 acres on the south side of the river is potential buildable land, although it is in the 100-year flood plain. The landfill has been utilized as a licensed Class 4 landfill, which allows dumping yard waste and some approved demolition materials. Currently Town ordinances allow only yard waste. The soil/rock displaced from the holes dug at the landfill have been used as backfill and road base material in Town projects. Yard waste burns are scheduled once a year.

### **C. Present Zoning Regulations**

The Town land use ordinances contain numerous zones that allow for flexibility with any land that might be annexed by the town. The R-1 (3/4 acre lot minimum) zone requirements reflect the western attitude of flexibility with the use of private property. The commercial areas are zoned C-1. The C-1 ordinance regulates business types, signage, and lot use issues. The A-3 zone includes the possibility of cluster housing to provide for additional spacing options on large tracts of land. Annexation will be considered as an opportunity to gain greater control over the growth in the immediate vicinity of Huntsville Town. No annexation will be undertaken without first assessing the ability to deliver services currently provided to residents and ensuring the potential deficit of revenue against expense to the city is not unreasonable.

No site construction is allowed until a building permit is approved. The Building Official cannot issue a building permit if the proposed structure does not conform to the Town ordinances. A certificate of occupancy must be applied for along with an application for a building permit. A Building Inspector approved final inspection is required before a house may be occupied.

### **D. Community Services**

1) Transportation

Traffic counts on local roads show a steady increase over the past decade in the number of vehicles using the roads and that Huntsville residents actually account for only a small percentage of daily traffic in the vicinity of the Town. Traffic within the town boundaries has seen a similar increase, with some problems resulting due to speeding in residential areas.

a. Road Maintenance

Huntsville Town obtains its road maintenance monies from the State Class B and Class C Road Funds. This State B & C Fund is maintained by taxes collected from gasoline sales and is distributed by a formula that divides monies among all roads in the state. Different categories of roads receive a specified number of points, which determines how much money can be obtained from the fund. This money must be used for buying road equipment, road materials, maintenance and snow removal expenses, etc. Huntsville Town has received monies in the past to help with its road maintenance, such as CDBG (Community Development Block Grant) funds. As the roads age and the traffic increases, roads has become the largest budget item in the Huntsville Town budget and future projections are there will not be enough money to maintain the roads in good condition.

b. Pedestrian needs

Walking is a popular pastime in town and poses a conflict at times due to unleashed dogs (see Animal Control). There are no sidewalks in Town and streets are often narrower and very slick in the wintertime.

c. Parking

There are no Town parking lots. The LDS church building in the center of town and the streets around the Town Park are used to park vehicles during large events, such as the Fourth of July. The Town is planning to develop a 40+ car stall parking lot immediately east of the Weber County Library. The Town has an ordinance that does not allow camping in vehicles overnight on public streets. During the summer season, visitors to the reservoir often park on Town streets and walk to gain access to the water or the facilities at Cemetery Point. This creates issues with trash, sanitation, vandalism, trespassing, and traffic congestion.

2) Public Safety

a. Law Enforcement

Huntsville contracts with the Weber County Sheriffs Office for police protection. The Weber County Sheriff offers a range of resources, especially well-coordinated backup officers for the occasional large crowds experienced during summer (May through September) recreational activities. Crime has traditionally been non-violent and infrequent, but with the increase in expensive, often vacant homes in the Valley, burglary has increased. The Town has occasionally contracted a part-time Ordinance Control Officer to aid in dealing with ordinance enforcement, primarily nuisance, animal control and land use issues.

b. Fire

Huntsville Town chose to be annexed in to the Weber Fire District and contracts with them for emergency services. A new fire station recently opened several blocks east of Town. The response time to Huntsville Town from this station is approximately 1-2 minutes, while crews traveling from Ogden City take approximately 15-20 minutes depending on urgency and location of the emergency. A recent survey of Town alleyways discovered several that are illegally blocked to an extent that they would prevent fire vehicles from getting close to buildings.

c. Animal Control.

At the present time, Huntsville Town employs Weber County Animal Control to handle domestic animal control concerns within the Town, supplemented by the Ordinance Control Officer. Huntsville Town has a dog leash requirement in its Animal Control ordinance that prohibits allowing dogs to roam freely, but occasional encounters with unleashed dogs occur.

d. Lighting

The Town has a lighting ordinance that specifies the type, size and location of lighting with the intent of to protecting open (dark) skies. Overhead streetlights are located at numerous intersections, but there are no traffic lights in Town.

e. Signing

The Town has a sign ordinance that specifies the use, type, size, quantity and location of signs.

3) Public Utilities

a. Culinary Water Supply

Currently Huntsville Town receives its culinary water supply from three springs, flowing out of what is known as Bennett Springs, located on unincorporated property southeast of the Abbey of Our Holy Trinity. Huntsville Town owns water rights to two of the springs and shares the rights to the third spring with the Abbey. The Town also owns a well near the current culinary water plant, and Hawkins Springs, that are currently not in use. The Town has a modern water treatment plant housing two styles of filters (media filter and bag), which allow for filtering down to the several micron levels. The plant is currently undergoing refurbishment to replace obsolete equipment. The plant includes room for more filtering units in the event of future increased demand for water. After the treatment process, the water is pumped to a one-million-gallon storage tank. The overall system is capable of handling more residences, allowing for modest future growth. If substantial growth were to take place, e.g., a major sub-division, upgraded facilities would be required. In the 2000s, follow-on CBD grants have allowed for several new water lines in Town to be installed, replacing and upgrading old lines and fire hydrants.

b. Irrigation Water Supply

The Town receives irrigation water from an underground delivery water system using a holding reservoir along the South Fork of the Ogden River east of Huntsville Town. The system is owned by the Huntsville Waterworks Corporation, composed primarily of Town residents, but independent of the Town. Being annexed into Huntsville Town does not have any bearing on whether the annexed property can be hooked into the irrigation water system. Culinary water is not permitted for irrigation purposes.

c. Power

The Town obtains electrical power from Rocky Mountain Power. Natural gas is available in Town from a natural gas feeder line paralleling the Trapper's Loop Highway from Mountain Green. A gas regulator station is located east of State Route 39 near the north side of the American Legion building, reducing the gas pressure to 50 psi. Interim High Pressure (IHP) lines were routed throughout the town. At the edge of each property, the IHP line is tapped and fitted to a service line (1/2" to 3/4" diameter at 15 psi, depending on household needs) which is then connected to a gas meter. The lines within the house or structure flow to appliances with four ounces of pressure.

d. Refuge

Huntsville Town contracts refuse disposal to a private company, which picks up containers at each household and exports the refuse to the Weber County Transfer Station who delivers it to the East Carbon County Landfill. The Town recently began a recycling program with a second container provided for recycle materials.

e. Sewage

All homes in Town are currently on individual septic systems. Due to continuing Valley growth, especially around the perimeter of Pineview Reservoir, the State of Utah has been promoting a Valley-wide sewer system to hopefully mitigate a declining Pineview Reservoir water quality. The Ogden Valley Master Plan points out that Weber County is seriously encouraging a Valley-wide sewer district to be instituted in the future. The Huntsville Town Council agreed to conduct a sewer feasibility study that provided recommendations and a draft Wastewater Capital Facilities Plan. After review of the benefits vs. the impacts to Town residents, the Council decided to continue using the current septic systems in the foreseeable future.



## **4. ANNEXATION PROCLAMATION FOR HUNTSVILLE TOWN**

### **A. Current Status of Huntsville Town**

Huntsville Town recognizes the majority of open space available for growth is east of State Route 39, which roughly circles the Town. Several pieces of Weber County property along Highway 39 to the immediate south of South Fork Village are currently zoned for commercial development (see Figure One). With the building of the US Postal Office building on the southwestern corner of the intersection of 500 South and Highway 39, this area was further established as one of two hubs of the Town's future commercial development. This area has also been identified by Weber County as a receiving zone for transferred development rights. Huntsville Town accepts this trend but will continue to also encourage suitable public and commercial development in the traditional commercial center of town, in hopes of maintaining it's unique character. The demolition of Valley Elementary school left the Town at a crossroads in the uses of this approximately 5 acres then zoned R1. The Town character will be reinforced or redefined by what happens at these two critical locations. The Town was able to negotiate the purchase of this land and rezoned it C1. A Request For Proposal (RFP) was issued by the Town in fall 2012 to solicit interested potential developers.

### **B. How Extension of Town Services Will Be Financed**

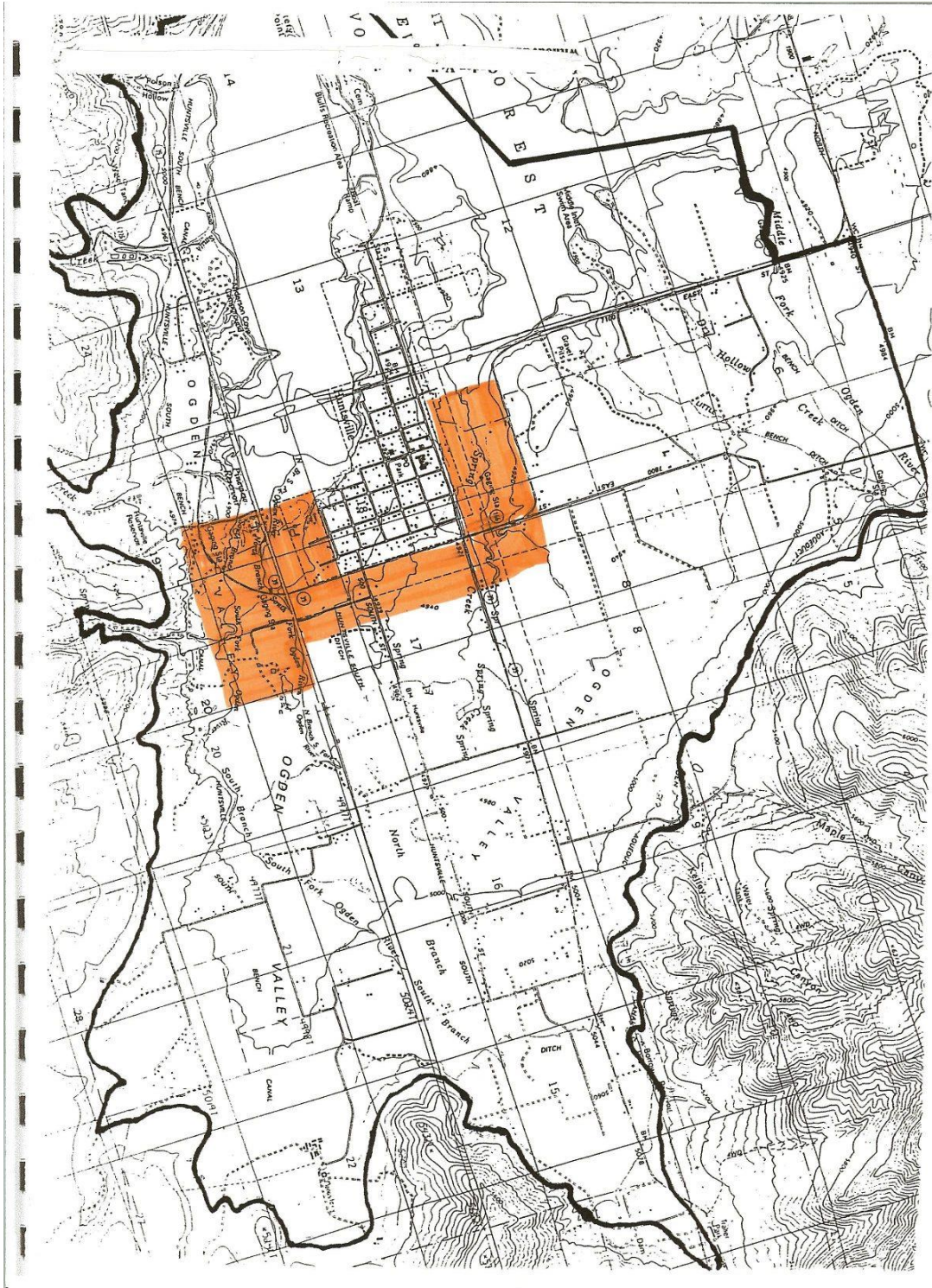
Huntsville Town current receives a tax levy over the amount charged unincorporated property in Ogden Valley that amounts to an approximately additional levy of .08% of the taxable value (approximately \$150 on an average house). That portion is used to help Huntsville Town finance the services identified in Section 3.D of this document and would be attached to any land annexed into Huntsville Town. In addition, if the impacts required were substantial enough in cost, the Town would levy impact fees on the developers of that land to provide the necessary services.

### **C. Huntsville Town Annexation Proclamation**

Huntsville Town has little say over how surrounding land in Weber County is developed. Being within incorporated Huntsville Town offers local residents the opportunity to play a greater role in how the/their property is developed. Based on Town survey results, the Town would prefer to annex nearby land up to the point that critical infrastructure (culinary and secondary water, traffic safety, road maintenance, etc.) can be provided. Huntsville Town will determine prior to any annexation if it is feasible to serve the proposed new area with utilities and other municipal services within a reasonable amount of cost and time. For areas which it does not have the capability to provide municipal services, annexation would not be approved unless the property owners in the area agree to pay impact fees that would allow for the necessary expansion of existing service capabilities. All agreements would be formalized in a written Memorandum of Understanding prior to starting the formal annexation process.

The area that would be considered for annexation into Huntsville Town is depicted by the black border in Figure One and is the Town's Annexation Proclamation. The boundary line represents the area that could possibly be supplied adequate culinary water pressure with the current water system. The shaded area on the map depicts the areas Huntsville Town is considering for near-term annexation. The Town desires to preserve it's existing grid system layout as much as land conditions and topography allows. The Town further recognizes there are natural sensitivities existing on much of the surrounding undeveloped land and feels it necessary to require appropriate sensitive land studies be conducted to evaluate the impacts of any rezoning or development. Of primary concern are the impacts involving wetlands, water aquifers and floodplains. Property will be annexed into the Town under it's current zoning whenever possible. The Town ordinances have similar zones to Weber County but do not have an RE-20 (20,000 sq foot lots) zone. The Town's A-3 zoning, similar to Weber County's AV-3, allows for some clustering of houses to take advantage of/preserve the natural features of the land while still maintaining some open space.

Town ordinances also allow for transfer of development rights. Huntsville Town supports the use of land trusts such as the Ogden Valley Land Trust. No development will be allowed that requires the main vehicular access be off State Route 39 unless safety and traffic concerns are adequately addressed with the Utah Department of Transportation.



**Figure One – Annexation Proclamation (in bold line) with color shading depicting approximate land areas considered for near-term annexation.**